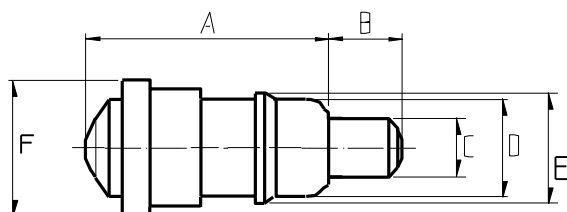


Floating Connctor_1Pin_Floating Series



Basic Specifications

Rated Current : 0.5A - 2A

Rated Voltage : AC/DC12V

Contact Resistance: 50mΩ – 100mΩmax

Operation Temp. : -40°C~+85°C

Pin Force : 9.8N on a pin from any direction

Cycle Durability: 5,000 – 20,000 times

Part Number	Rated Current	Reference Working Range (mm)	Working Height/ Spring Force	Contact Resistance	Cycle Durability	Dim.					
						A	B	C	D	E	F
S-J-2007F-1-00-0000	0.5A	(2.05 – 2.3)	2.05mm/1.0N Max 2.3mm/0.3N Min	100mΩ	5,000 times	1.95	0.65	0.9	1.5	1.7	1.9
S-J-2607F-1-00-0000	2A	(2.75 - 2.95)	2.75mm/1.1N Max 2.95mm/0.4N Min	100mΩ	5,000 times	2.6	0.7	0.9	1.5	1.7	1.9
S-J-2907F-1-00-0000	2A	(3.0 - 3.2)	3.0mm/1.1N Max 3.2mm/0.4N Min	100mΩ	5,000 times	2.85	0.7	0.9	1.5	1.7	1.83
S-J-3010F-1-00-0000	2A	(3.1 - 3.55)	3.1mm/1.1N Max 3.55mm/0.4N Min	100mΩ	5,000 times	3.0	1.0	0.9	1.5	1.7	2.12
S-J-3109F-1-00-0000	2A	(3.4 - 3.6)	3.4mm/1.1N Max 3.6mm/0.4N Min	100mΩ	5,000 times	3.1	0.9	0.9	1.5	1.7	2.1
S-J-3311F-1-00-0000	2A	(3.5 - 3.8)	3.5mm/1.1N Max 3.8mm/0.4N Min	100mΩ	5,000 times	3.25	1.1	0.8	1.25	1.45	1.9
S-J-3511F-1-00-0000	2A	(3.7 - 4.1)	3.7mm/1.1N Max 4.1mm/0.4N Min	100mΩ	5,000 times	3.5	1.1	0.9	1.5	1.68	2.1
S-J-3712F-1-00-0000	2A	(3.9 - 4.5)	3.9mm/1.1N Max 4.5mm/0.4N Min	100mΩ	5,000 times	3.7	1.2	0.9	1.5	1.7	2.12
S-J-4013F-1-00-0000	2A	(4.2 - 4.8)	4.2mm/1.1N Max 4.8mm/0.4N Min	100mΩ	5,000 times	4.0	1.3	0.9	1.5	1.7	2.1
S-J-4412F-1-00-0000	2A	(4.55 – 5.15)	4.55mm/1.1N Max 5.15mm/0.4N Min	50mΩ	5,000 times	4.4	1.2	0.9	1.5	1.7	2.1
S-J-4614F-1-00-0000	2A	(4.75 - 5.45)	4.75mm/1.1N Max 5.45mm/0.4N Min	100mΩ	5,000 times	4.55	1.4	0.9	1.5	1.7	2.1
S-J-4917F-1-00-0000	2A	(5.1 – 6.1)	5.1mm/1.3N Max 6.1mm/0.4N Min	100mΩ	20,000 times	4.9	1.7	0.9	1.5	1.7	2.1
S-J-5617F-1-00-0000	2A	(5.75 – 6.75)	5.75mm/1.1N Max 6.75mm/0.4N Min	50mΩ	5,000 times	5.55	1.7	0.9	1.5	1.7	2.3
S-J-5917F-1-00-0000	2A	(6.1 – 7.1)	6.1mm/1.1N Max 7.1mm/0.4N Min	100mΩ	5,000 times	5.9	1.7	0.9	1.5	1.7	2.2
S-J-6020F-1-00-0000	2A	(6.4 - 7.3)	6.4mm/1.1N Max 7.3mm/0.4N Min	100mΩ	5,000 times	6.0	2.0	0.9	1.5	1.7	2.1
S-J-6717F-1-00-0000	2A	(6.85 – 7.85)	6.85mm/1.2N Max 7.85mm/0.3N Min	50mΩ	20,000 times	6.65	1.7	0.9	1.5	1.7	1.8
S-J-7117F-1-00-0000	2A	(7.35 - 8.9)	7.35mm/1.2N Max 7.9mm/0.6N Min	100mΩ	5,000 times	7.05	1.7	0.9	1.5	1.7	2.12
S-J-7417F-1-00-0000	2A	(7.7 - 8.25)	7.7mm/1.2N Max 8.25mm/0.6N Min	100mΩ	5,000 times	7.4	1.7	0.9	1.5	1.7	2.12
S-J-7817F-1-00-0000	2A	(8.0 - 9.0)	8.0mm/1.2N Max 9.0mm/0.4N Min	100mΩ	20,000 times	7.8	1.7	0.8	1.25	1.4	1.85
S-J-8622F-1-00-0000	2A	(9.3 – 10.4)	9.3mm/1.3N Max 10.4mm/0.4N Min	100mΩ	20,000 times	8.6	2.2	0.9	1.5	1.7	2.1
S-J-11722F-1-00-0000	2A	(12.4 – 13.5)	12.4mm/1.3N Max 13.5mm/0.4N Min	50mΩ	20,000 times	11.7	2.2	0.9	1.5	1.7	2.1

Electrical Characteristic

Rated Current : AC/DC 12V 0.5A - 2A(See Above Table)

Contact Resistance : 50mΩ - 100mΩ(See Above Table)

Mechanical Characteristics

Pin Force: 0.3N Min – 1.3N Max (See Above Table)

Pin Strength : 9.8N force on pin from any direction for 1min.

Other Characteristic

Operational Durability : 5000 times – 20,000times (See Above Table)

**Low Temp. Durability : Store in temp. $-40^{\circ}\text{C} \pm 3^{\circ}\text{C}$ for 96 hours
then ,leaves in the ambient temp. for 1 hour**

**High Temp. Durability: Store in temp. $+85^{\circ}\text{C} \pm 2^{\circ}\text{C}$ for 96 hours
then ,leaves in the ambient temp. for 1 hour**

Humidity Durability : Store in temp. $+60^{\circ}\text{C} \pm 2^{\circ}\text{C}$ with humidity of 90~95% for 96 hours

**Temp. Cycle Test : Cycle 5 times (Table1. shows test condition for 1 cycle)
Leave in the ambient temp. for 1 hour.**

Temp. And Humidity Cycle Test: 10 times of a cycle test based on JIS C60068-2-38

Anti-corrosion (Salt Water Spray) : The electrical performance shall measured after continuous spray of salt water with $5 \pm 1\%$ density and $35 \pm 2^{\circ}\text{C}$ temp. for 48 hours, cleaning with lukewarm water and dry, and leaving in ambient temperature for 1 hours

Vibration Test : Connect each connector pin in series, conducting current of 0.1A. After that the vibration described below is added.
* Amplitude 1.5mm
* Sweeping cycle 10~55~ 10Hz/minute,
* Duration of test: 2hours for each of X,Y,Z axis

Shock Test : Connect each connector pin in series, conducting current of 0.1A. After that , the shock described below is added.
* Accelerating rate: 490m/s^2
* Operating time of the test: 11ms
* The number of operating times: *3shocks at X,Y,Z axis both.
*In negative and positive direction.

- The specifications shown in this catalogue are subject to change without notice.
- Storage conditions: 35days max in room temperature

Table 1. Temperature Cycle

Step	Temperature($^{\circ}\text{C}$)	Time(minites)
1	-40 ± 3	30 - 35
2	5 - 35	10 - 15
3	85 ± 2	30 - 35
4	5 - 35	10 - 15

Fig 1. Temp. and Humidity Cycle



Fig 2. Reflow Profile

